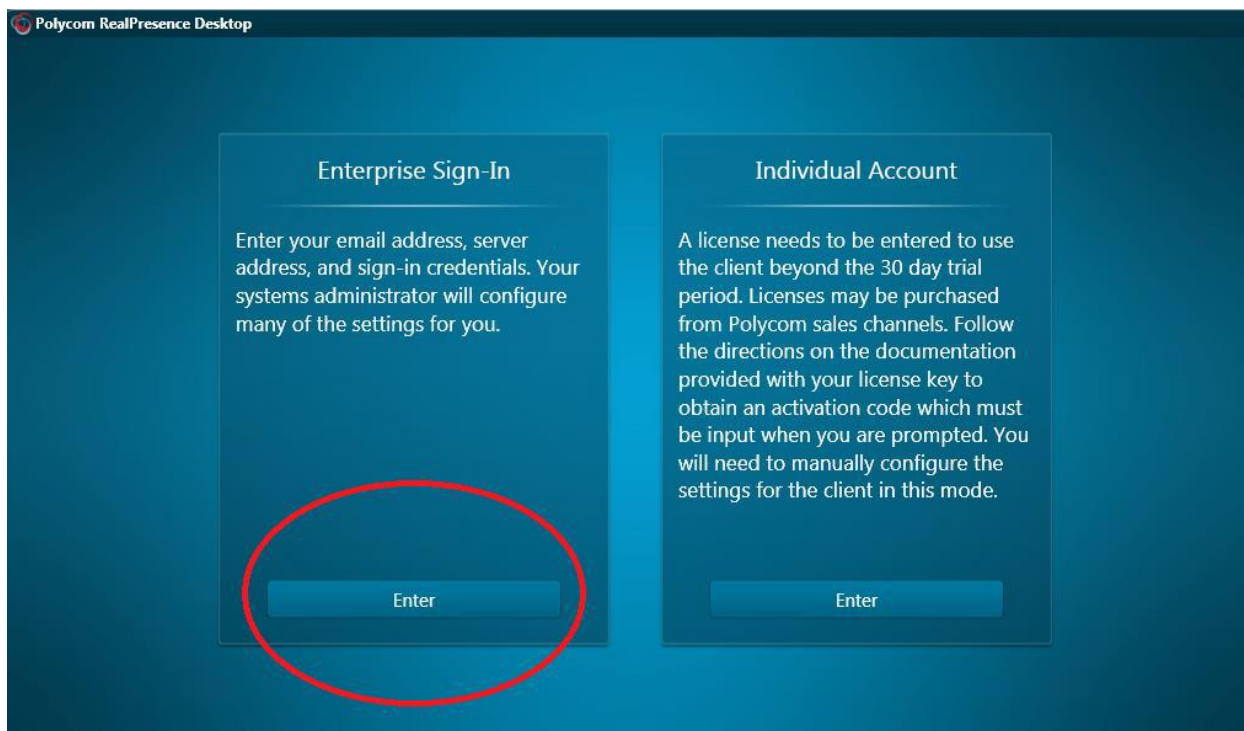


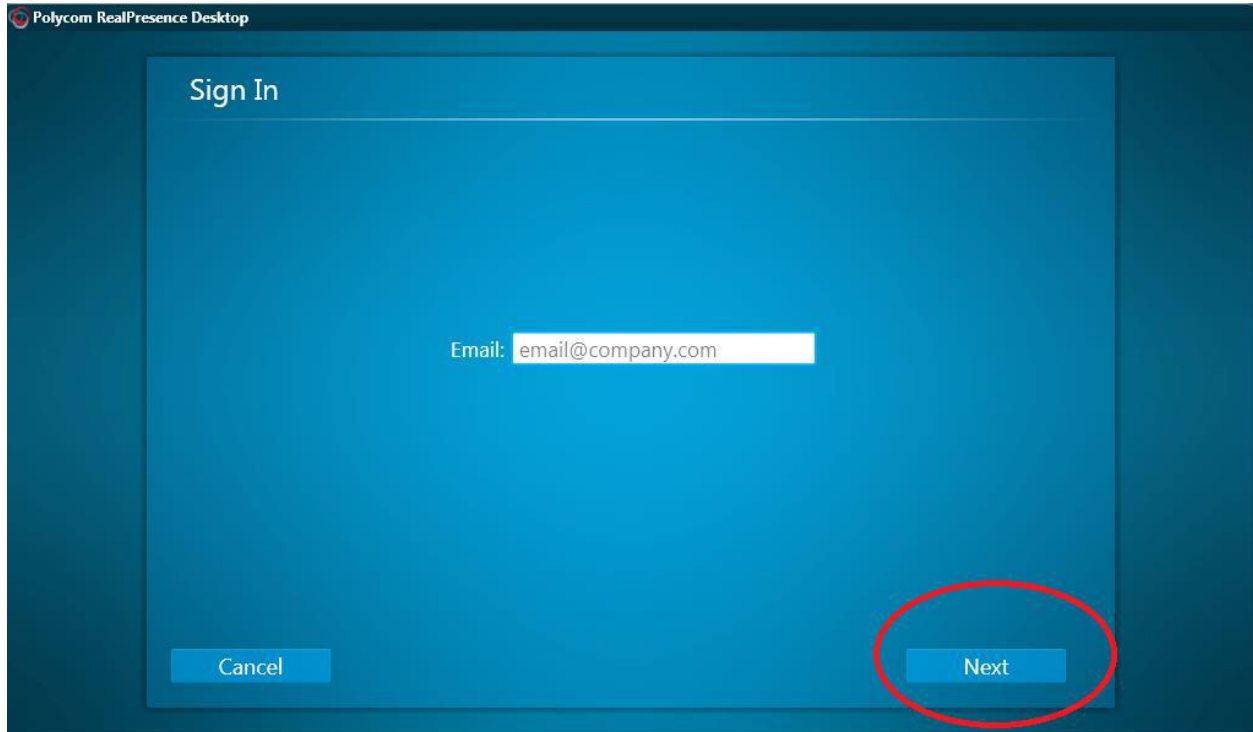
Polycom RealPresence Desktop for PC

http://support.polycom.com/PolycomService/support/us/support/eula/rpd/RPDagreement_v3_2_1_win.html

Step 1: After download, open the RealPresence Desktop Software. Click on “Enter” under “Enterprise Sign-In”.



Step 2: Leave E-mail empty and Click on “Next”.



Step 3: For “Server” type IP 137.52.8.31. Sign-In using Username: Student 1, Student 2, Student 3...and Password: nova1234

Polycom RealPresence Desktop

Sign In

Email:

Server:

Sign in using network login credentials(Belma-PC\Belma)

User Name:

Password:

Remember password

Step 4: Enter your class code in the space provided and click on “Call” icon.

